

# The Meadows

## Consultation 3

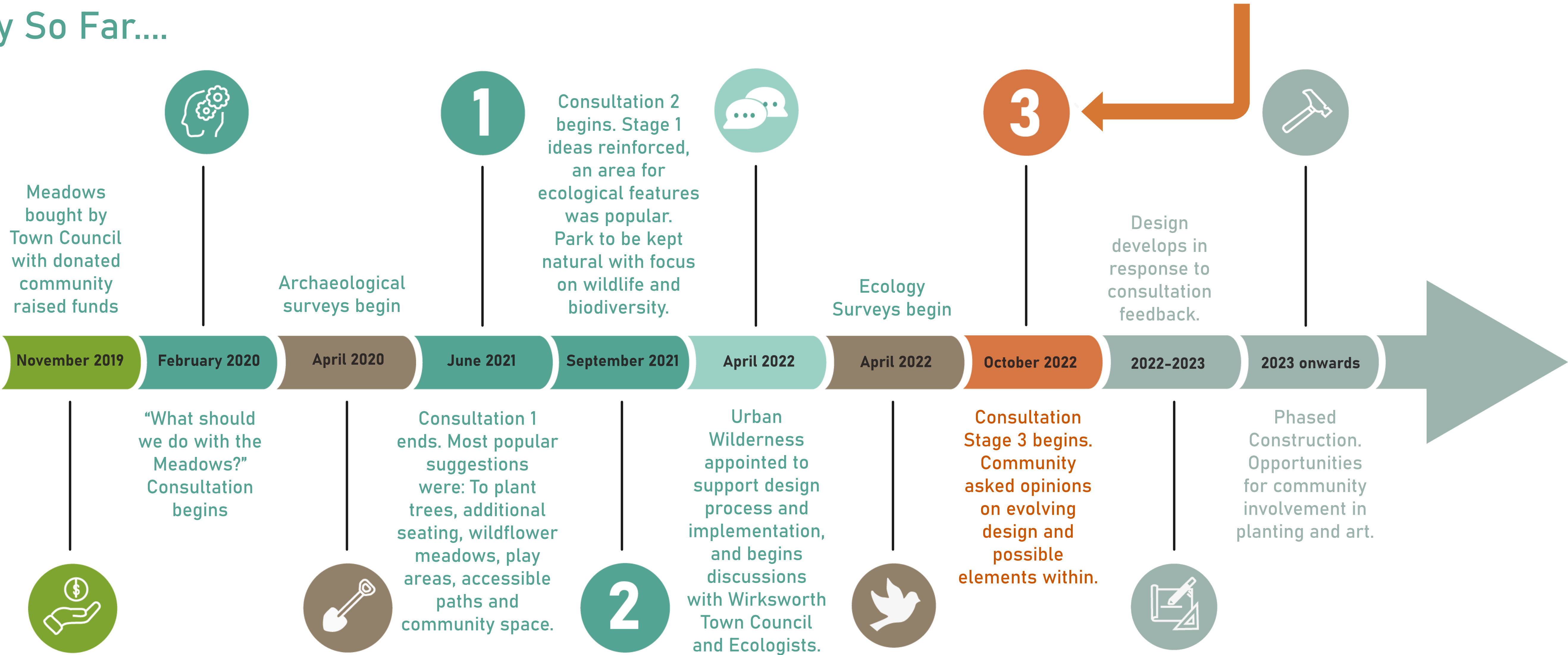
Urban Wilderness have been appointed by Wirksworth Town Council to evolve a scheme for the Meadows based on consultation with the local community to date. Following this round of consultation, the design will be further evolved to reflect feedback, ensuring that community needs are met and local voice is embodied within the proposals. The following sheets offer an overview of the current indicative proposals for the Meadows.



**Have your say!**  
If you live, work or play in Wirksworth, then we want to hear your thoughts in response to the proposed design.

**We are here!**

### The Story So Far...





# Site Analysis:

An appraisal of the consultation 1 & 2 reports, desktop study data, archeological and ecological survey information has been undertaken, in addition to site visits. This in depth analysis has helped us to identify the site's opportunities and constraints which are highlighted within the plans below. This understanding of the site's baseline conditions have informed a bespoke, site specific design approach, sensitive to landscape character and helping to direct a strong sense of place.

The plans below highlight key considerations which have informed the emerging design proposals.



## Boundaries & Features

The site benefits from the setting of the Wirksworth Conservation Area that it sits within. It is currently used primarily as a go-between from the high street, to neighbouring residential areas.

### KEY

- Wall treatment
- Rear garden fence treatment
- Hedge treatment
- Structural vegetation
- Garden tree planting visible from within the site
- Mature lime tree avenue
- Sporadic yew trees located throughout the existing tree belt
- Private gated access into the site
- Stone gate posts defining threshold into the site
- Archaeological site
- Grade II Listed Building
- Grade II\* Listed Building
- Utilities
- Conservation Area boundary



## Movement & Key Spaces

Two Public Rights of Way run through the site. An ill-defined junction in the north east corner presents navigation challenges for some users. This is further compounded by stone bollards, narrowing access.

### KEY

- Access points
- Primary connections
- Secondary connections
- Existing PROWs
- St Johns Street (high street)
- Narrow pavement along St Johns Street compromising pedestrian access
- High boundary walls enclosing narrow footpaths
- Access point inaccessible to wheelchair users, pushchairs etc
- Local bus stops
- Sun trap
- Shaded areas



## Landscape Composition

The existing landscape character predominately consists of grassland habitat, with scrub and semi-mature woodland. There is great potential to further enrich the landscape with its context.

### KEY

- Grassland habitat
- Scrub habitat
- Semi-mature woodland
- Scattered shrubs / small trees
- Tall ruderal / grassland habitat
- Mature Lime tree avenue
- Amenity grassland
- Bare Earth
- Mature garden with ornamental evergreen specimen tree planting
- 1m contours
- Low area may be prone to occasional flooding



## Visual Connections

The site is visually well connected to its immediate surroundings and rural context, however, it is screened from the highstreet. There is therefore, opportunity to improve legibility and sense of invitation from the highstreet. There are currently very few opportunities to pause and appreciate the beauty of the site and its wider landscape setting.

### KEY

- Key long distance views from within the site
- Poor visual permeability into the site from Summer Lane
- Visual permeability/surveillance into the site from surrounding properties
- Built edge of neighbouring properties strongly visible from within the site
- Seating providing views towards the wider landscape



# A Vision For The Future:

This page sets out a Vision for the design and an associated set of Design Principles, both informed by our analysis of the site and its potential to deliver for the community of Wirksworth.

The Design Principles are embedded within the evolving scheme, to ensure a rich, engaging and dynamic space, of benefit to all the community:

## Vision:

“The Meadow’s project aims to enrich the existing landscape for both local residents and wildlife, optimising its value for the present, whilst safeguarding for the future. Protected and enhanced habitats, improved access, circulation and interpretation, and the provision for rest and active recreation, including play, will increase the social and ecological worth of an important community greenspace at the heart of Wirksworth.”

## Design Principles:



**Play:**  
Naturalistic play features for all ages.



**Seating:**  
Spaces for stopping, sitting and relaxing.



**Planting:**  
A biodiverse matrix of planting that enhances existing vegetation.



**Features:**  
A range of built features to provide shelter, storage and points of visual interest.



**Access:**  
Greater connectivity for all and improved signage.



**Activity:**  
Areas for the community to come together. Opportunity for ongoing active participation in site evolution.



**Nature:**  
Natural features that encourage wildlife into the site.



**Identity:**  
The enhancement and celebration the site's unique sense of place and character.



### Key Zones

- Proposed south facing lawn area; potential for recreation, community activities etc
- Species-rich grassland / meadow planting with informal mown paths and areas for play, exploration, picnic benches and potential wetland features
- Species-rich meadow planting punctuated by native shrubs / small trees along site boundaries to filter views of surrounding properties
- New proposed key routes / existing key routes to be enhanced
- Widened footpath along northern boundary wall to accommodate space for seating and potential community activities eg. growing
- Key node where several existing routes meet with proposed wayfinding and interpretation boards

### Key Interventions

- Wayfinding / interpretation
- Key vantage point / seating opportunities
- Potential opportunities for community growing
- Potential fruit tree planting (small, native fruit and nut species)
- Central area for community gathering/flexible amenity space
- Natural play opportunities (boulders, stepping logs, nature trails)
- Species rich wildflower meadow with potential interpretation
- Potential sustainable drainage feature to be planted with marginal plant species
- Potential crossing points
- Existing lime tree avenue to enhanced and made more visible
- Proposed tree planting to filter views between surrounding properties and the site
- Proposed improvement from St Johns Street to allow access (for wheelchair users, pushchairs etc.)
- Potential stepped access off Yorkcliffe Drive
- Shipping container storage facility

### Key Views

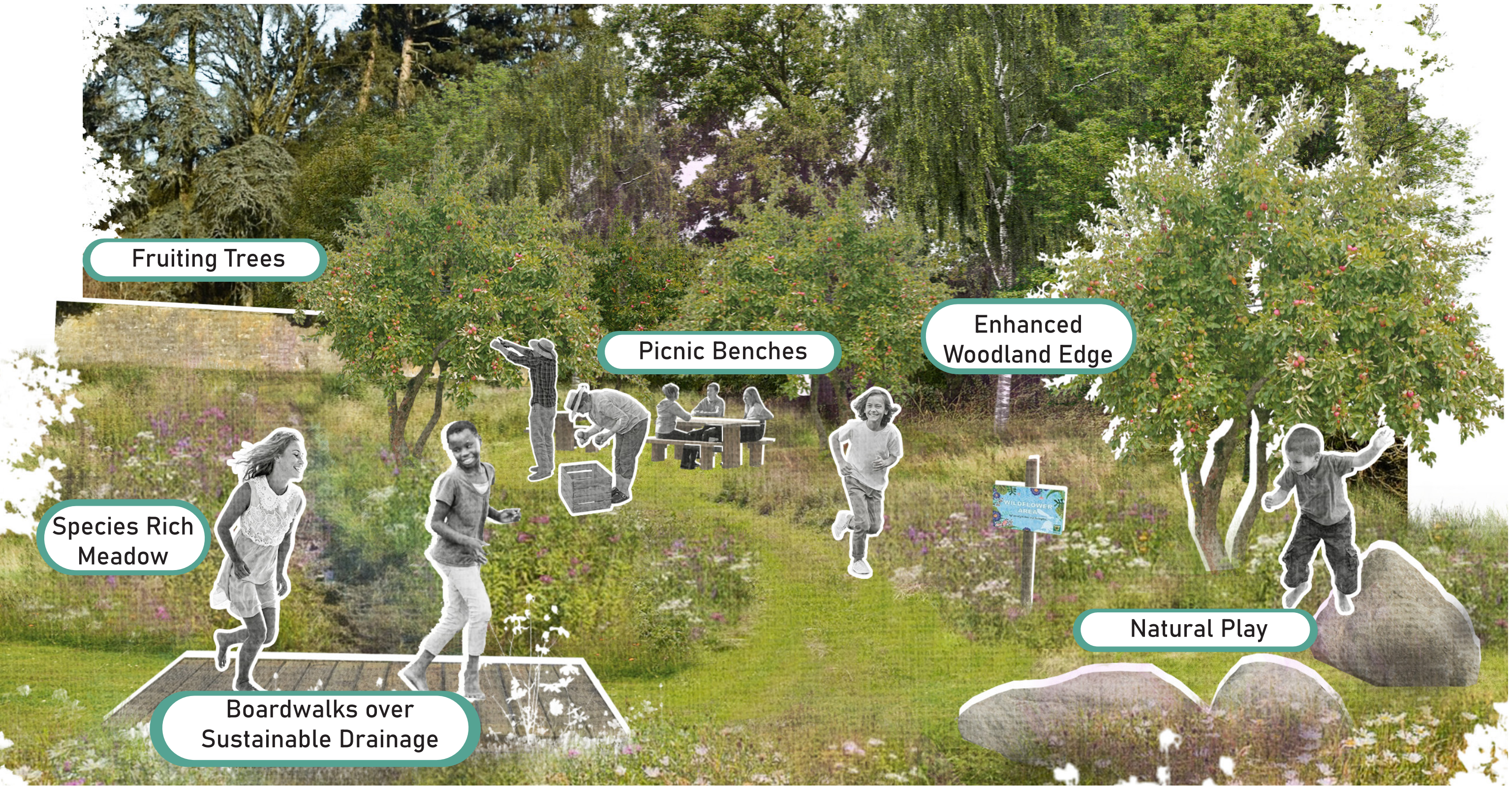
- St Mary's Church to the north
- Specimen evergreen tree planting to the north
- Rolling hills to the east
- Cliff to the west
- Improved visual permeability into the site from Summer Lane



# A Vision For The Future:



1. Artist impression of the pathway alongside the northern brick wall boundary.



2. Artist impression of the meadow within the middle of the site.



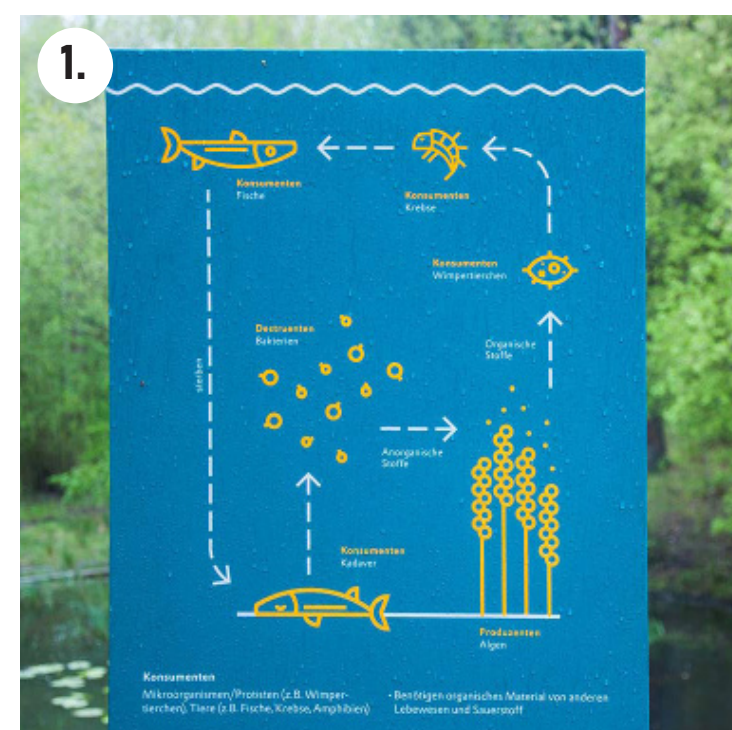
3. Artist impression of the existing woodland along the eastern boundary.



Keyplan



# Ecological Features



What ecological features would you like to be created?

1. Educational interpretation signage
2. Pollinator planting
3. Planted bio-swales (sustainable drainage feature)
4. Bird & bat boxes
5. Dead wood piles
6. Bug hotels

Other? Please specify?



# Planting



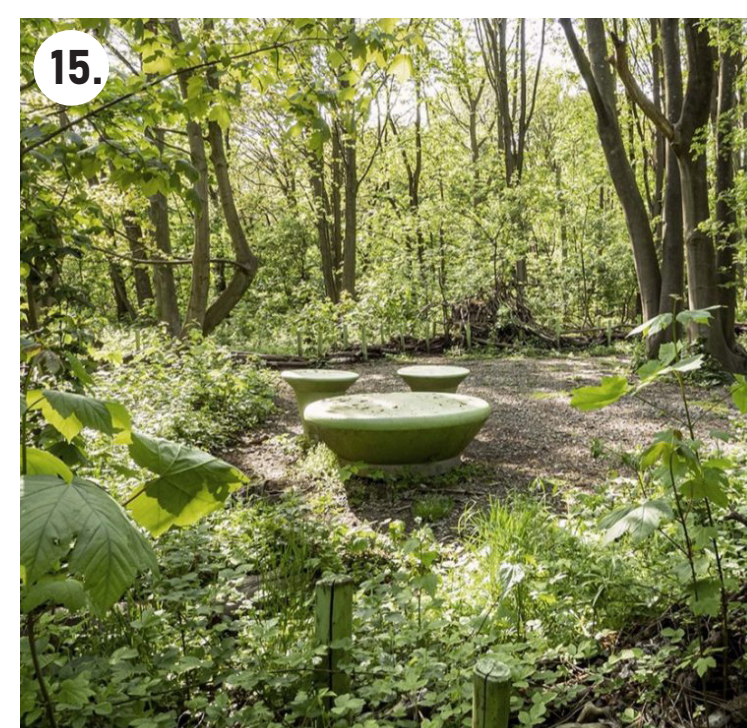
What types of planting would you like to see?

7. Grove of trees
8. Area of native scrub
9. Edible plants & trees
10. Wildflower meadow (diversification of existing grassland)
11. Native woodland understorey establishment
12. Semi-natural grassland

Other? Please specify?



# Activity Spaces



What characteristics would you like the activity spaces to have?

13. Informal, mown areas within meadow
14. Formal hard surfaced areas
15. Secluded areas within woodland / planting
16. Large area of mown grass
17. Gathering area enclosed by vegetation / sculptural features (image: David Nash, Ash Dome 1977)
18. Timber decked area

Other? Please specify?



# Play



What types of play features would you like to use?

19. Timber balance play trail
20. Climbing equipment
21. Willow nest
22. Den building area
23. Swings
24. Colourful timber equipment

Other? Please specify?





## Seating

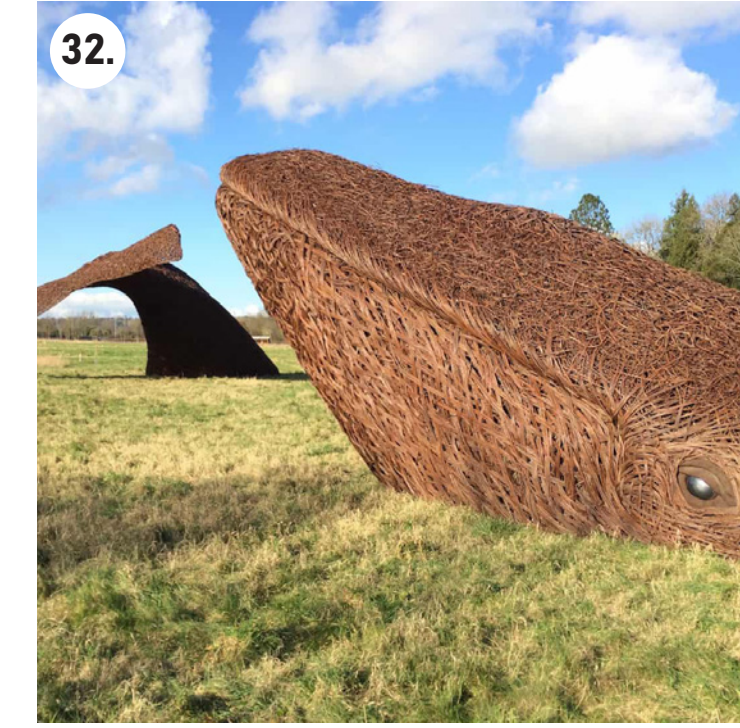


What types of furniture would you use?

- 25. Gabion baskets with timber top
- 26. Long timber bench with fruit trees
- 27. Naturalistic timber bench
- 28. The Wirksworth bench (recycled plastic)
- 29. Informal, carved timber seats
- 30. Stainless steel bench

Other? Please specify?

## Features



What features you like to see within the Meadows?

- 31. Willow archway
- 32. Sculptures
- 33. Art exhibition boards / space
- 34. Interactive sculptures
- 35. Storage container with green roof
- 36. Storage container with solar panels and decking

Other? Please specify?

## Paths and Signs



Which of the following paths and signs do you like?

- 37. Self binding gravel
- 38. Sections of timber boardwalk
- 39. Mown grass
- 40. Stepping stones
- 41. Timber finger post directional signage
- 42. Mosaic signage trail

Other? Please specify?

## Feedback

Thank you for taking the time to look through the current design proposals. Please provide your feedback, by the 31st of October 2022, by either:

1. Posting a completed A4 printed feedback form to:
  - postbox on the outside of Wirksworth Town Hall (available 24/7)
  - postbox inside Wirksworth Library (available during library opening hours)
2. Filling out the questionnaire online @ [www.wirksworthtowncouncil.gov.uk/the-meadows](http://www.wirksworthtowncouncil.gov.uk/the-meadows)

Next Steps



Contact Information:

For any queries or additional information, please contact Wirksworth Town Council:

Email: [enquiries@wirksworth.gov.uk](mailto:enquiries@wirksworth.gov.uk)

Telephone: 01629 823408

Call for stories about the Meadows!

We also want to hear your personal stories about the Meadows, to provide further inspiration for the emerging design. Please fill out the story section on either the printed or online questionnaire form.

I.e. What special memories have you created in the Meadows?

I.e. What wildlife have you seen?